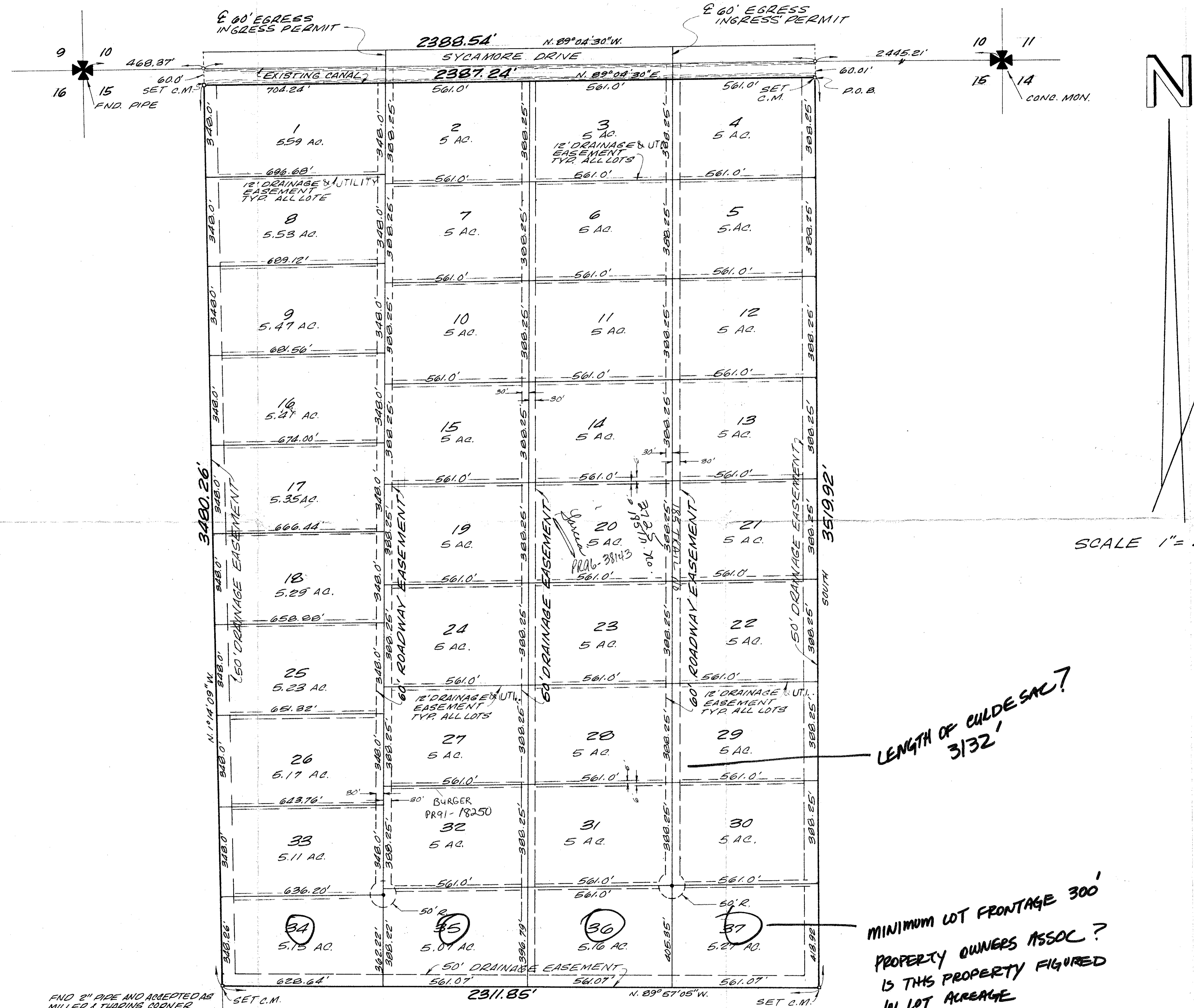


# 5 LAS FLORES RANCHOS



SCALE 1" = 200'

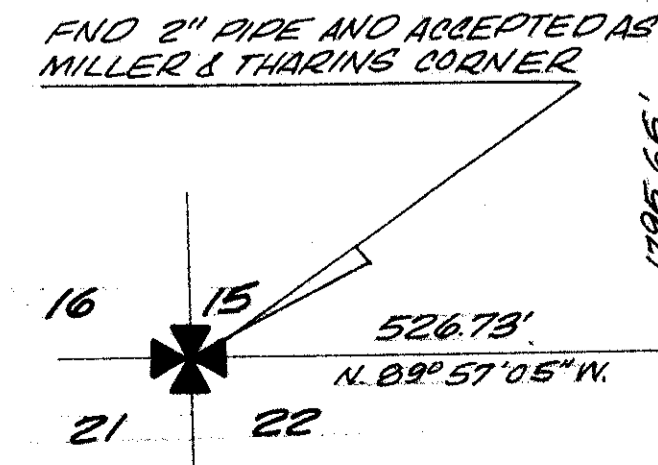
## DESCRIPTION

COMMENCING AT THE NORTHEAST CORNER OF SECTION 15, TOWNSHIP 43 SOUTH, RANGE 40 EAST, PALM BEACH COUNTY, FLORIDA, RUN S. 89° 04' 30" W. ALONG THE NORTH LINE OF SAID SECTION, A DISTANCE OF 2445.21 FEET TO A POINT; THENCE RUN SOUTH A DISTANCE OF 60.0 FEET TO THE POINT OF BEGINNING. FROM THE POINT OF BEGINNING CONTINUE SOUTH A DISTANCE OF 3519.92 FEET TO A POINT; THENCE RUN N. 29° 57' 05" W. A DISTANCE OF 2311.85 FEET TO A POINT; THENCE RUN N. 1° 14' 09" W. A DISTANCE OF 3480.26 FEET TO A POINT 60.0 FEET SOUTH OF THE NORTH LINE OF SECTION 15; THENCE RUN N. 89° 04' 30" E. A DISTANCE OF 2387.24 FEET TO A POINT OF BEGINNING.

THE ABOVE TRACT CONTAINS 188.77 ACRES

LENGTH OF CULDESAC? 3132'

MINIMUM LOT FRONTAGE 300'  
PROPERTY OWNERS ASSOC.?  
IS THIS PROPERTY FIGURED IN LOT ACREAGE



BOUNDARY SURVEY BY JOHN VAN NORMAN REGISTERED LAND SURVEYOR No. 1557

ur0344.igr LAS FLORES RANCHOS

Malek & Associates Consulting Engineers, Land Planners, Land Surveyors Delray Beach, Florida 33444		
DATE JAN. 1979	LOS-FLORES-RANCHOS SUBDIVISION	SCALE AS SHOWN
JOB ORDER 01-7901	SITE PLAN	SHEET OF